



1.1 Recommendations before you start:

You will require a USB device which has been formatted using the Qu mixer **Utility / Qu-Drive** screen.

Please refer to the '[Understanding Qu-Drive and USB](#)' document in the [Allen & Heath Qu Series Knowledgebase](#).

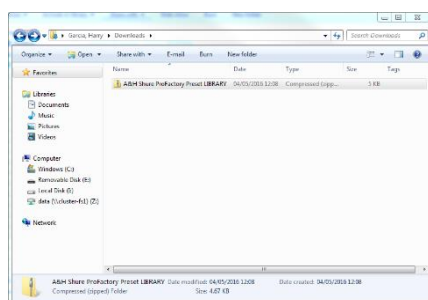
If the drive has already been formatted in the mixer, you do not need to do this again.

To avoid the accidental overwriting or loss of existing user Libraries, we recommend clearing the **USB device\AHQU\LIBRARY** folder before copying new Library files to this folder.

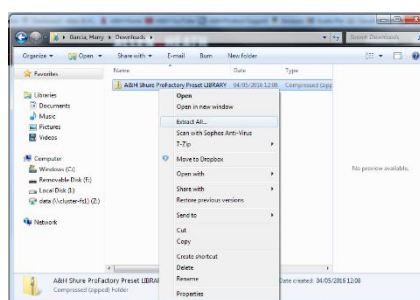
Please **back up** any Library "LIB" .DAT files you have in here **before** proceeding.

To do this, move any "LIB" .DAT file from this folder to a safe location on your computer.

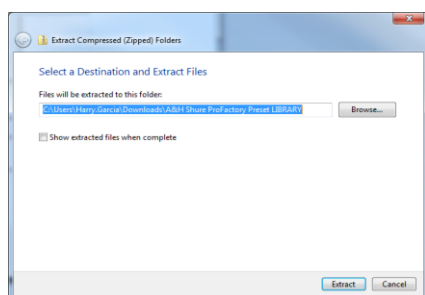
1.2 Download and Un-Zip the ProFactory Preset Files:



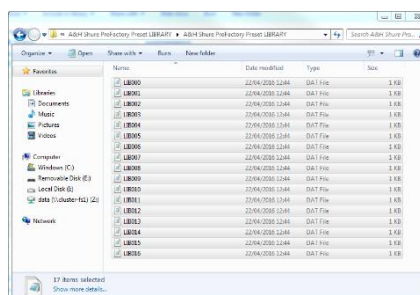
Download the "A&H ProFactory Preset" ZIP file.



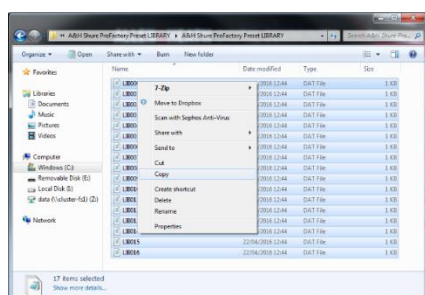
Extract the ZIP file.



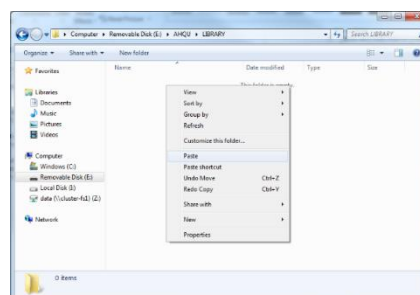
Select the destination folder and click "Extract".



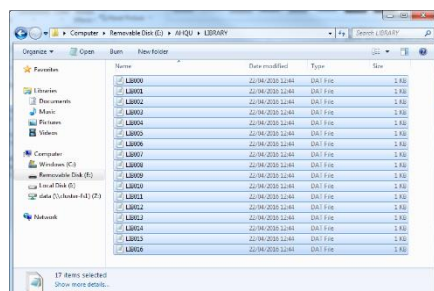
Select all "LIB" .DAT files in the extracted folder.



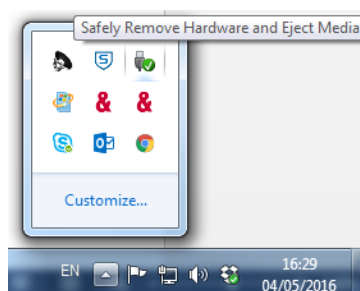
Copy all "LIB" .DAT files from the folder.



Paste all "LIB" .DAT files into USB device\AHQU\LIBRARY.



"LIB" .DAT files will now be copied to USB device.



Safely Eject Media before removing the USB device.

1.3 USB Data – Library transfer



Once you have transferred the ProFactory Preset files to the USB device. Plug the USB device into the mixer's Qu-Drive port.

Individual processing and FX Libraries can now be transferred between the Qu mixer and the USB device.



The list on the left displays libraries stored in the Qu mixer. The list on the right displays those found on the USB device.

Libraries are transferred as data files numbered from '0'. Both the number and name will appear in the USB list.

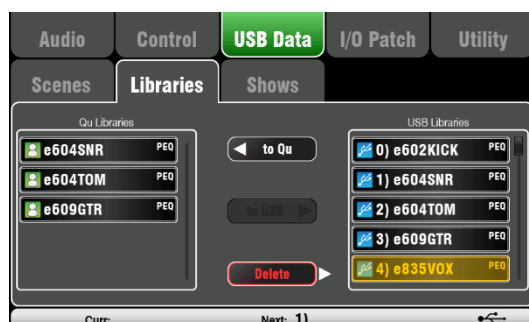
To Qu – Touch to highlight a USB Library item then touch 'to Qu' to copy the mixer.

Once copied, the highlighted list increments ready to copy the next if required.

We recommend that you only copy required presets to the Mixer.

Delete – Highlight a library in the USB list. Touch 'Delete' to remove it.

Libraries can only be deleted from the from the USB device in this menu.



1.4 Working with Libraries:



Press a fader strip **Sel** key then **Processing** to view the processing for that channel.

Touch the PEQ tab in the top part of the Touch Screen and press the **Fn** key to open the **Library** page.

Library lists – The left hand list displays related processing block libraries, for example PEQ. The right hand list displays libraries for complete input Channel processing.

Factory Libraries – Built-in libraries are available as examples or to give you a starting point for live mixing. These cannot be deleted or edited.

User Libraries – This is where you will find transferred ProFactory Presets. You can also name and save your own settings for quick recall. User libraries can be overwritten, renamed and deleted using this screen.

Recall - Highlight a library item and touch '**Recall**' to instantly load its settings.

Store - Touch '**Store New**'. Enter a name using the screen keypad to store a new User Library.

To Edit – Highlight a library item and touch '**Overwrite**' to replace an existing library with the current settings, or '**Delete**' to remove it from the list. Touch the 'Name' box to edit its name.

Up to 128 User library items can be stored in the mixer.

ⓘ There is no 'standard' setting for instruments in live mixing as many factors affect the sound, for example the instrument itself, its pickup, the mic used, room acoustics and more. For this reason the **Factory** libraries simply provide a starting point or examples.

